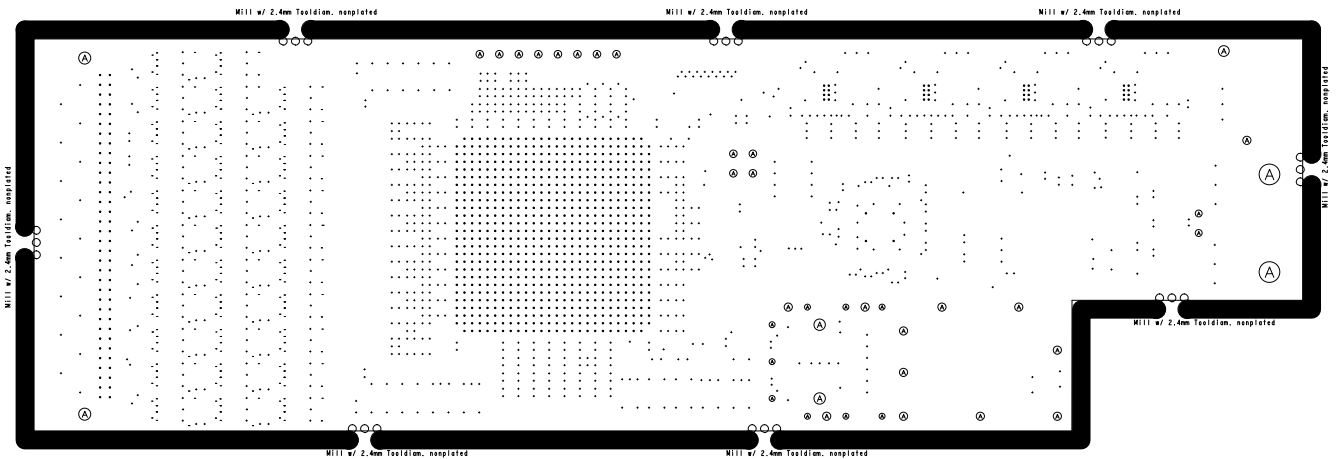


Jobname	Date	Designer	Layouter
CBM-RICH-FEE1	04.2012	M.Traxler	S.Voltz

Layer Nickname

Fab



DRILL CHART: TOP to BOTTOM

ALL UNITS ARE IN MILLIMETERS

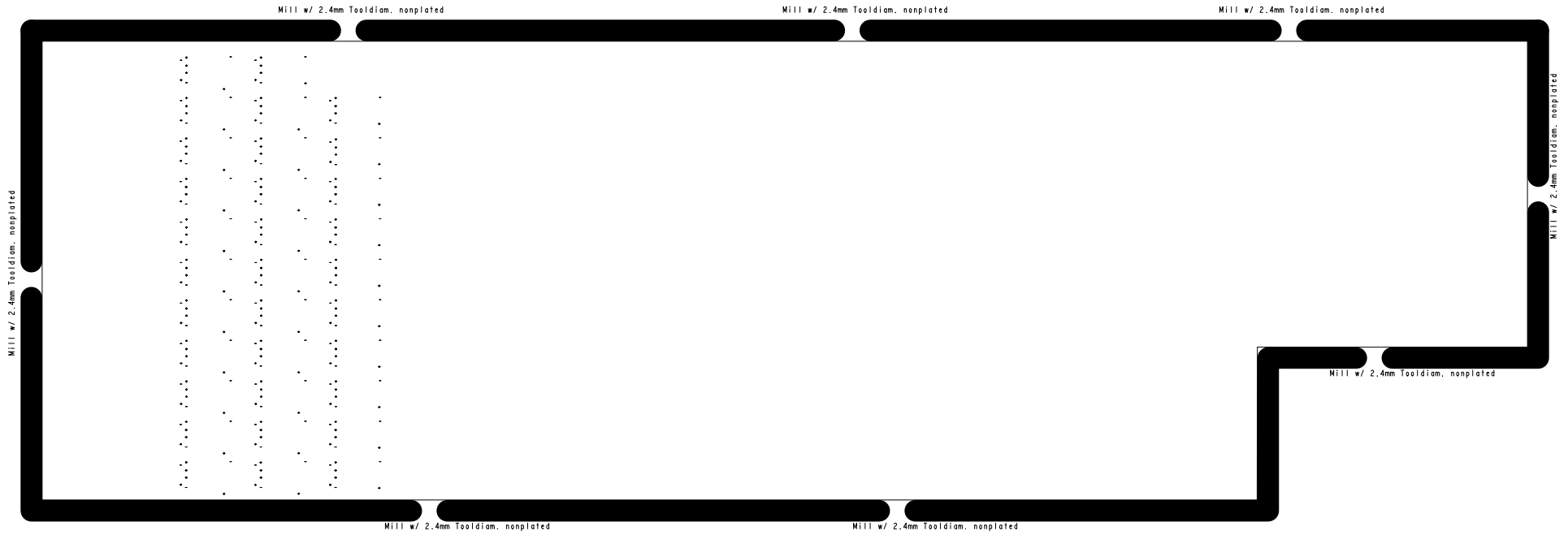
FIGURE	SIZE	PLATED	QTY
.	0.2	PLATED	776
.	0.2	PLATED	1008
◦	0.4	PLATED	1
⊙	0.8	PLATED	9
⊙	0.9	PLATED	2
⊙	1.0	PLATED	12
⊙	1.1	PLATED	11
○	1.0	NON-PLATED	24
⊙	1.1	NON-PLATED	1
⊙	1.4	NON-PLATED	1
⊙	1.5	NON-PLATED	2
⊙	1.6	NON-PLATED	2
○	2.4	NON-PLATED	16
Ⓐ	2.7	NON-PLATED	2

TOTAL HOLES: 1867



Jobname Date Designer Layouter
 CBM-RICH-FEE1 04.2012 M.Traxler S.Voltz

 Layer Nickname Drd



DRILL CHART: TOP to INNER1			
ALL UNITS ARE IN MILLIMETERS			
FIGURE	SIZE	PLATED	QTY
.	0.2	PLATED	160

TOTAL HOLES: 160

Jobname
CBM-RICH-FEE1

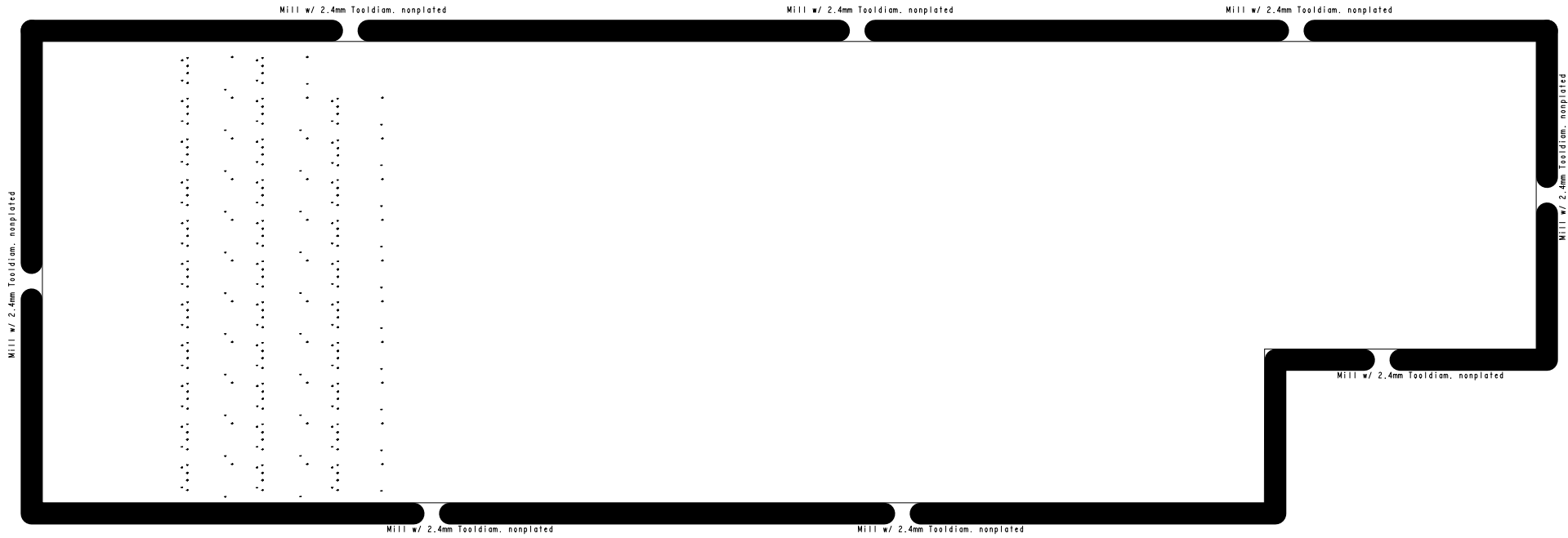
Date
04.2012

Designer
M.Traxler

Layouter
S.Voltz

Layer Nickname

Drd



DRILL CHART: INNER10 to BOTTOM			
ALL UNITS ARE IN MILLIMETERS			
FIGURE	SIZE	PLATED	QTY
.	0.2	PLATED	160
TOTAL HOLES:			160

Jobname
CBM-RICH-FEE1

Date
04.2012

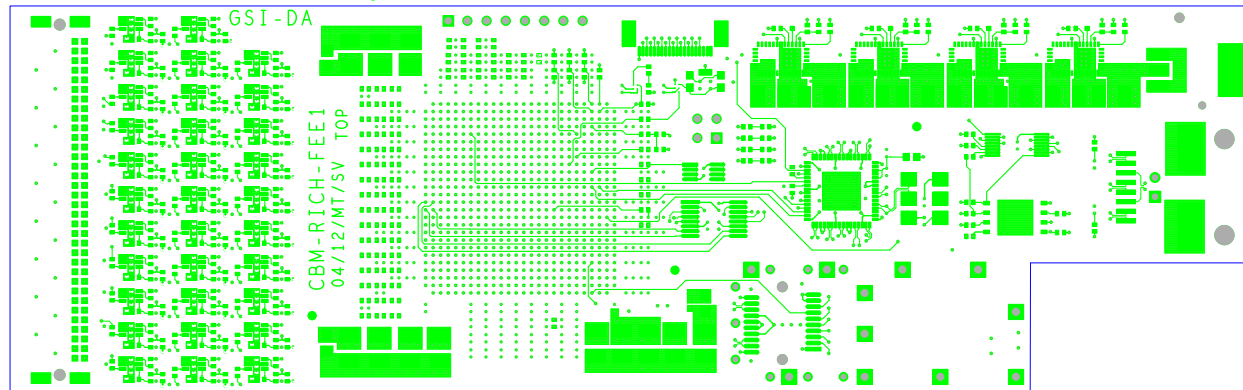
Designer
M.Traxler

Layouter
S.Voltz

Layer Nickname

Drd

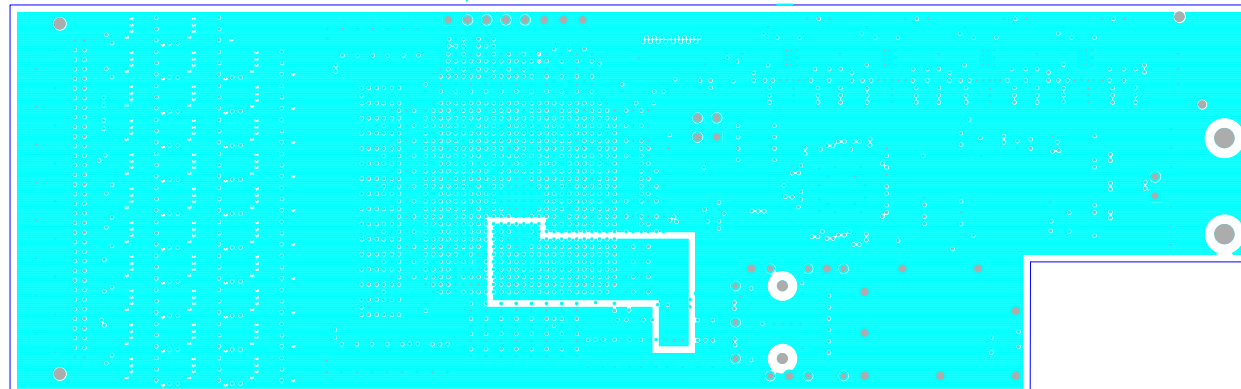
TOP- Signals



Jobname	Date	Designer	Layouter
CBM-RICH-FEE1	04.2012	M.Traxler	S.Voltz

name

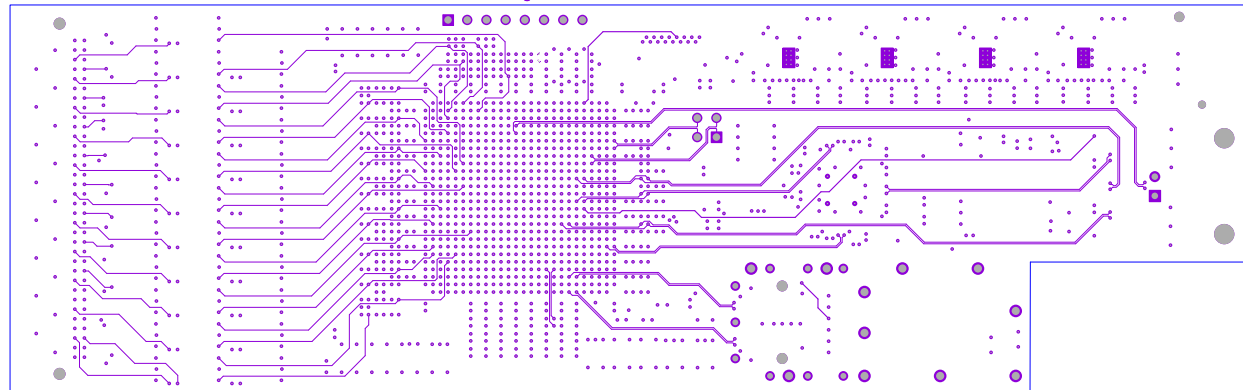
IN1- GND-Plane, Planes: +1.2V VCCA



Jobname	Date	Designer	Layouter
CBM-RICH-FEE1	04.2012	M.Traxler	S.Voltz

name

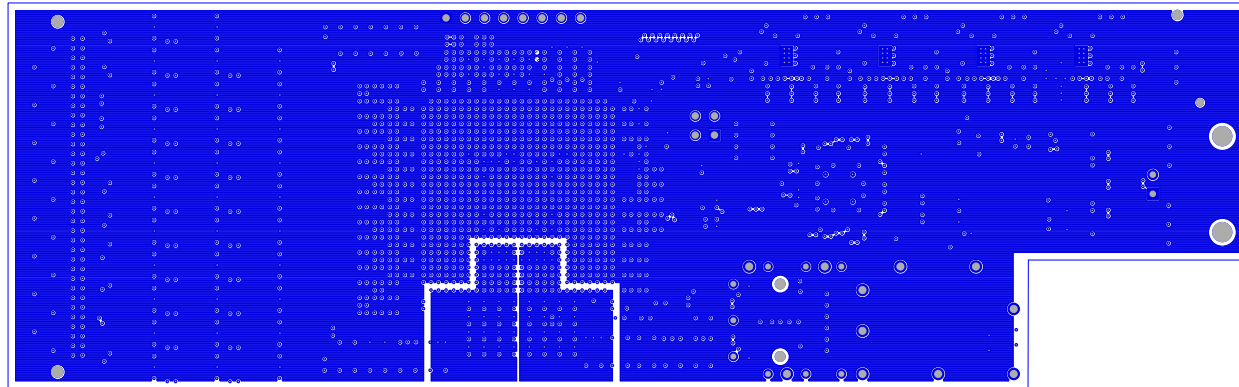
IN2- 500hm single ended, Diff. Pairs



Jobname	Date	Designer	Layouter
CBM-RICH-FEE1	04.2012	M.Traxler	S.Voltz

name

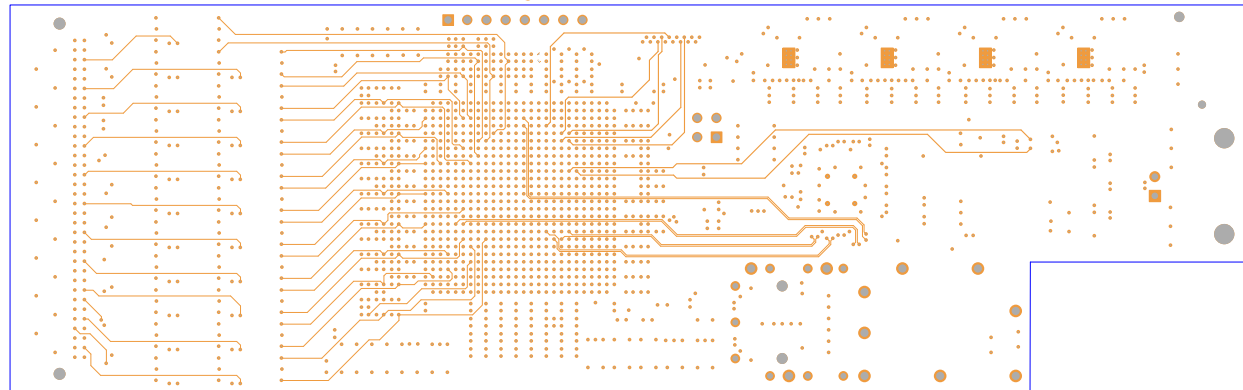
IN3- Planes: +3V3,+1.2V_lo_L, +1.2V_lo_R



Jobname	Date	Designer	Layouter
CBM-RICH-FEE1	04.2012	M.Traxler	S.Voltz

name

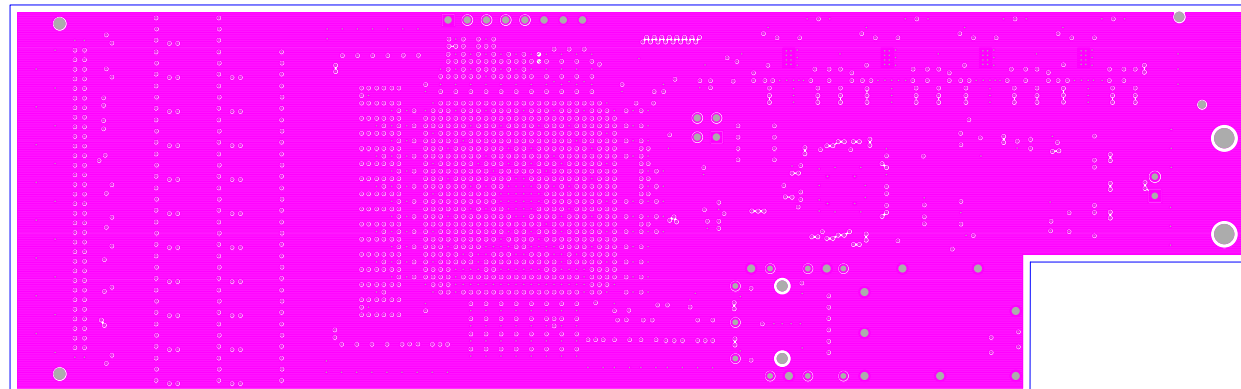
IN4- 500hm single ended, Diff. Pairs



Jobname	Date	Designer	Layouter
CBM-RICH-FEE1	04.2012	M.Traxler	S.Voltz

n ame

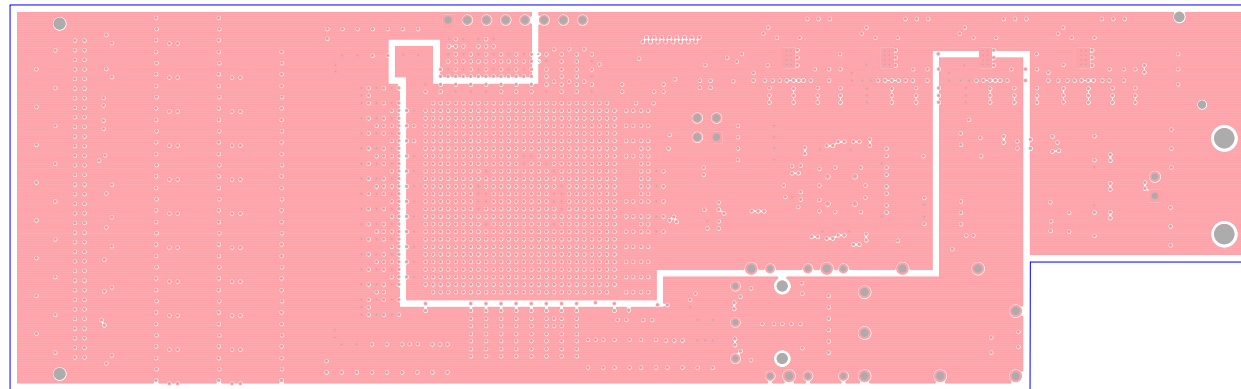
IN5- GND-Plane



Jobname	Date	Designer	Layouter
CBM-RICH-FEE1	04.2012	M.Traxler	S.Voltz

name

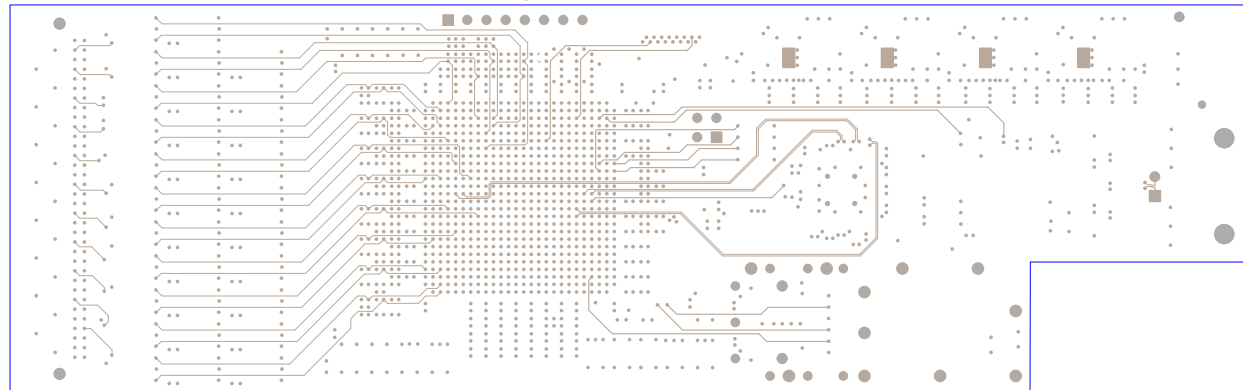
IN6- Planes: +2V0,+2V5



Jobname	Date	Designer	Layouter
CBM-RICH-FEE1	04.2012	M.Traxler	S.Voltz

n
a
m
e

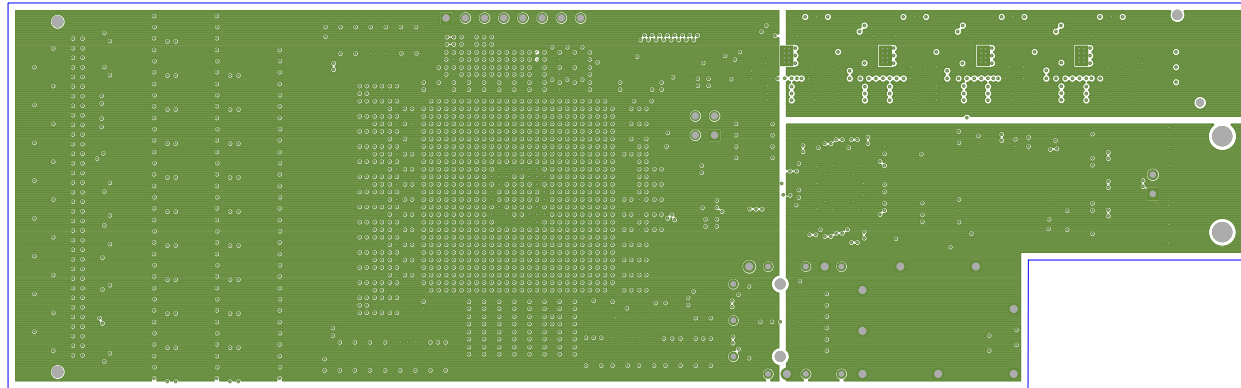
IN7- 500hm single ended, Diff. Pairs



Jobname	Date	Designer	Layouter
CBM-RICH-FEE1	04.2012	M.Traxler	S.Voltz

n ame

IN8- Planes: +1V2,+6V,GND



Jobname
CBM-RICH-FEE1

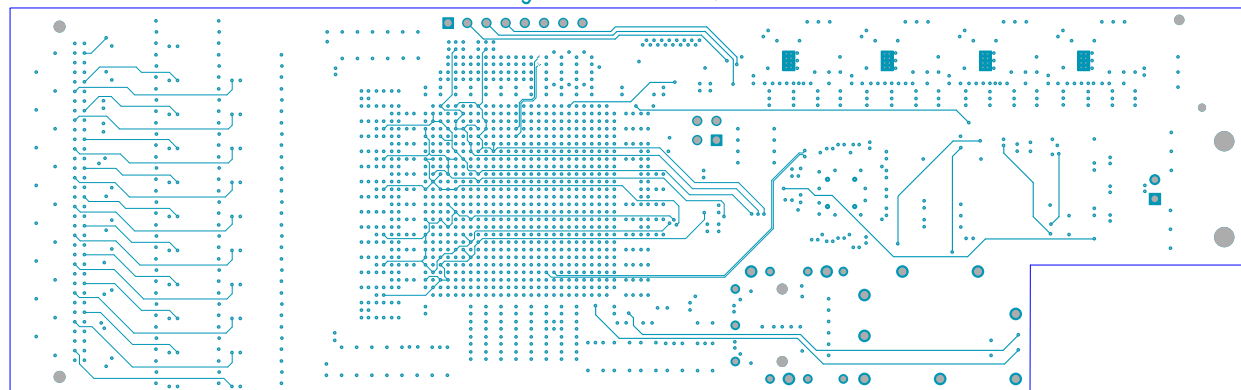
Date
04.2012

Designer
M.Traxler

Layouter
S.Voltz

name

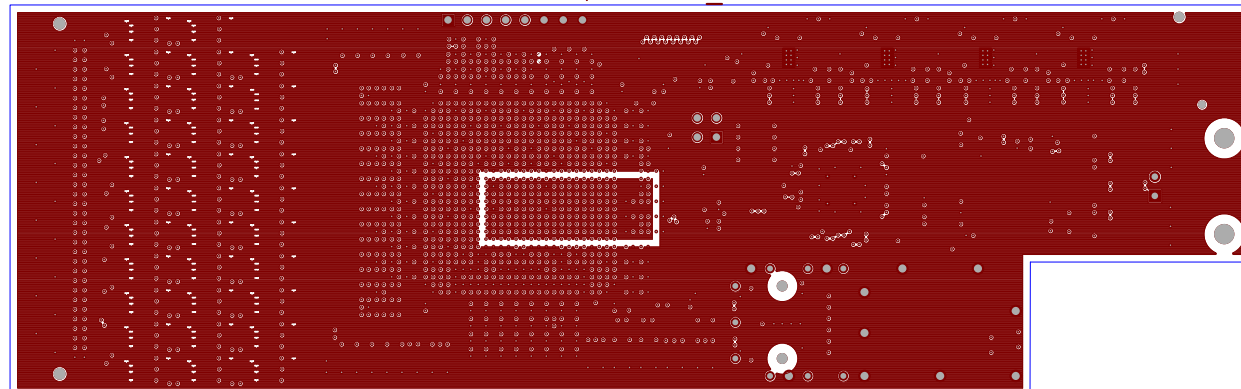
IN9- 500hm single ended, Diff. Pairs



Jobname	Date	Designer	Layouter
CBM-RICH-FEE1	04.2012	M.Traxler	S.Voltz

n ame

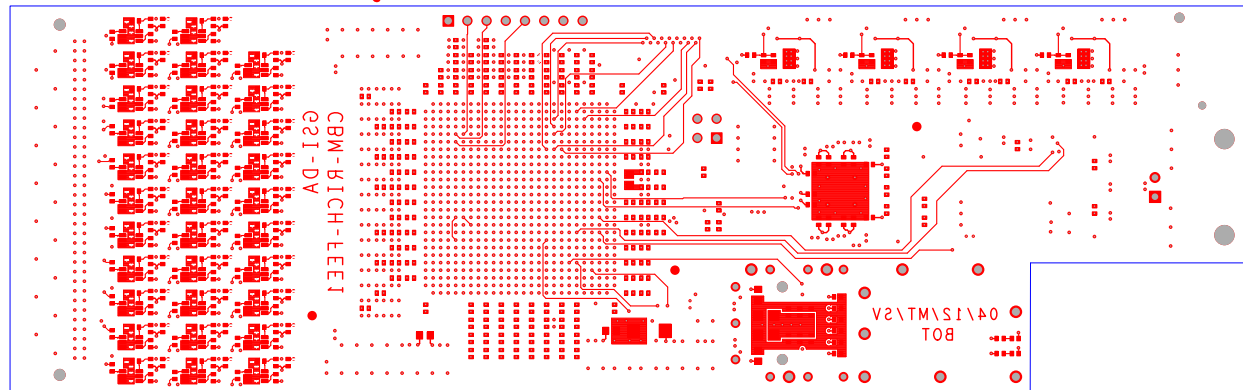
IN10- GND-Plane, +3.3V_PLL



Jobname	Date	Designer	Layouter
CBM-RICH-FEE1	04.2012	M.Traxler	S.Voltz

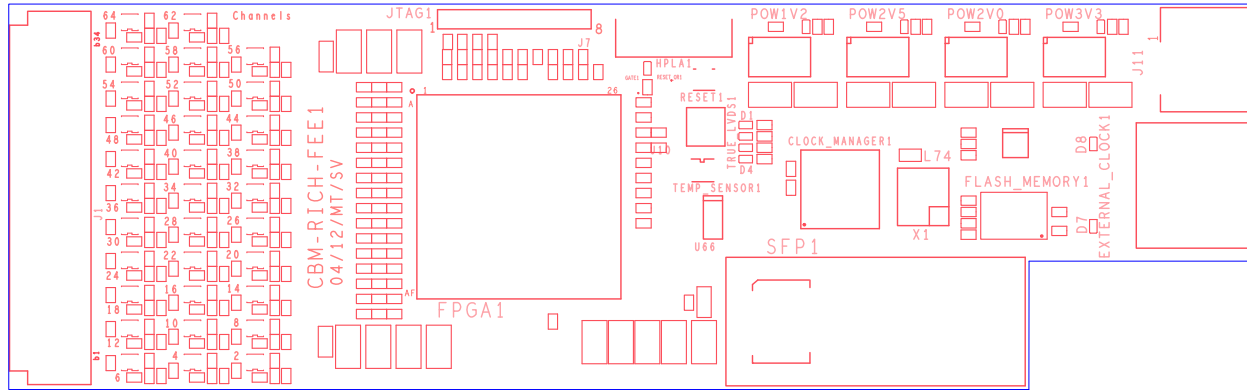
name

BOT- Signals



Jobname	Date	Designer	Layouter
CBM-RICH-FEE1	04.2012	M.Traxler	S.Voltz

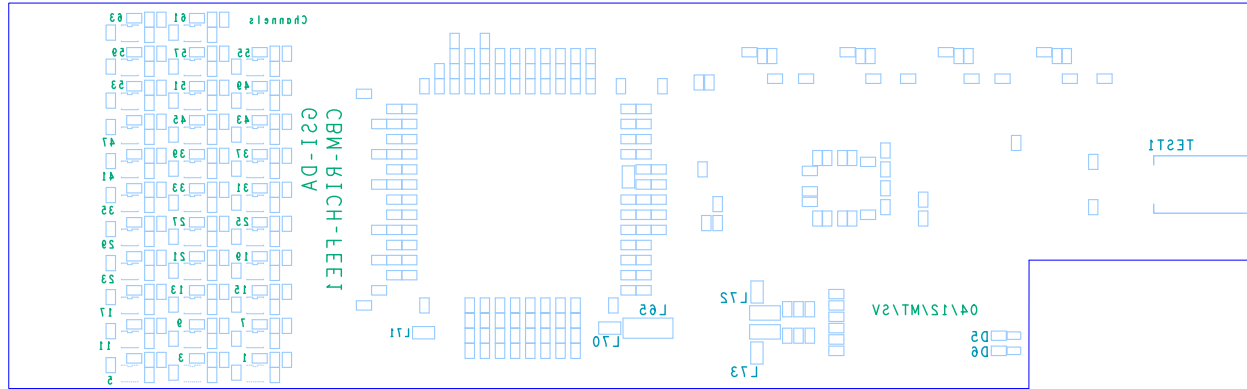
name



Jobname	Date	Designer	Layouter
CBM-RICH-FEE1	04.2012	M.Traxler	S.Voltz

Layer Nickname

Sst



	Jobname	Date	Designer	Layouter
	CBM-RICH-FEE1	04.2012	M.Traxler	S.Voltz
Layer	Nickname			
	Ssb			

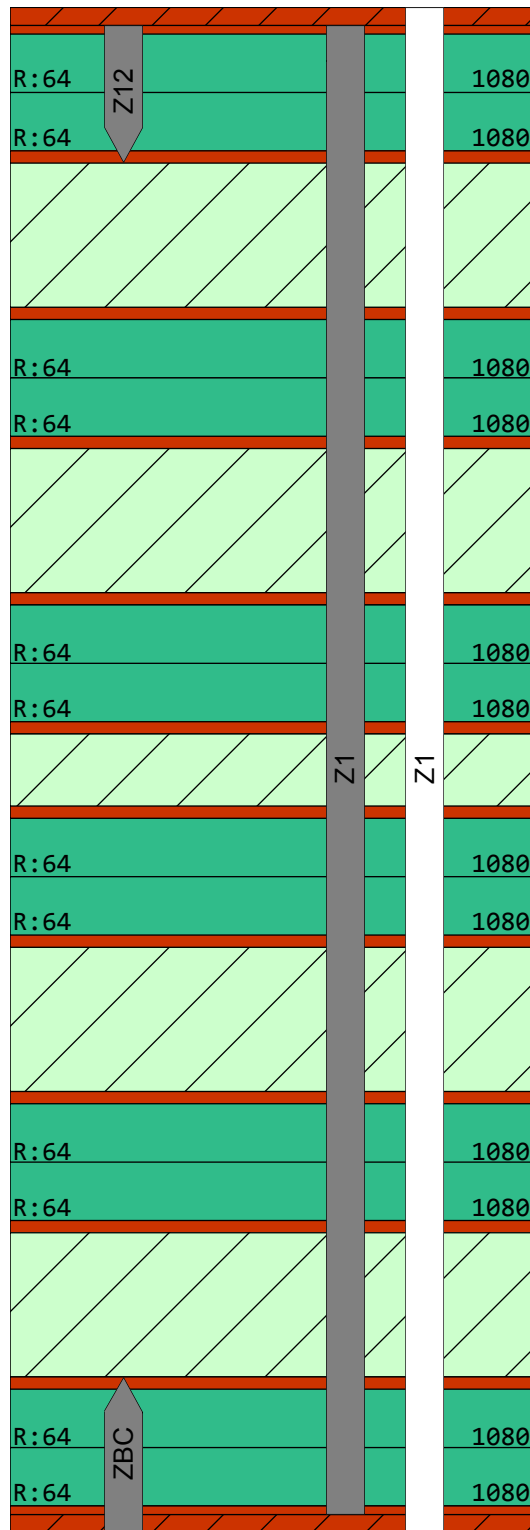
Material (µm)

Stack up

File

Assembly

25 Galvanic Cu
 12 Copper
 75 NP-155F-B
 64 NP-155F-B
 17 Copper
 200 NP-155F-TL
 17 Copper
 64 NP-155F-B
 64 NP-155F-B
 17 Copper
 200 NP-155F-TL
 17 Copper
 64 NP-155F-B
 64 NP-155F-B
 17 Copper
 100 NP-155F-TL
 17 Copper
 64 NP-155F-B
 64 NP-155F-B
 17 Copper
 200 NP-155F-TL
 17 Copper
 64 NP-155F-B
 64 NP-155F-B
 17 Copper
 200 NP-155F-TL
 17 Copper
 64 NP-155F-B
 75 NP-155F-B
 12 Copper
 25 Galvanic Cu



BS

I2

I3

I4

I5

I6

I7

I8

I9

I10

I11

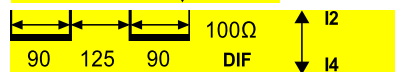
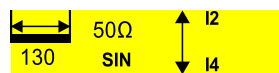
LS

A1

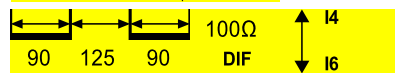
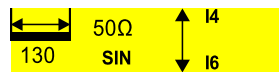
Pressed thickness 1.88 mm

Date 28.03.2012
 Generated by gbiernat

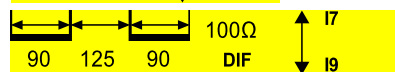
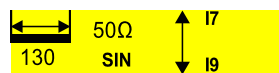
i3



i5



i8



10

