

# The new Hades Software Collection (HSC)

## *Why?*

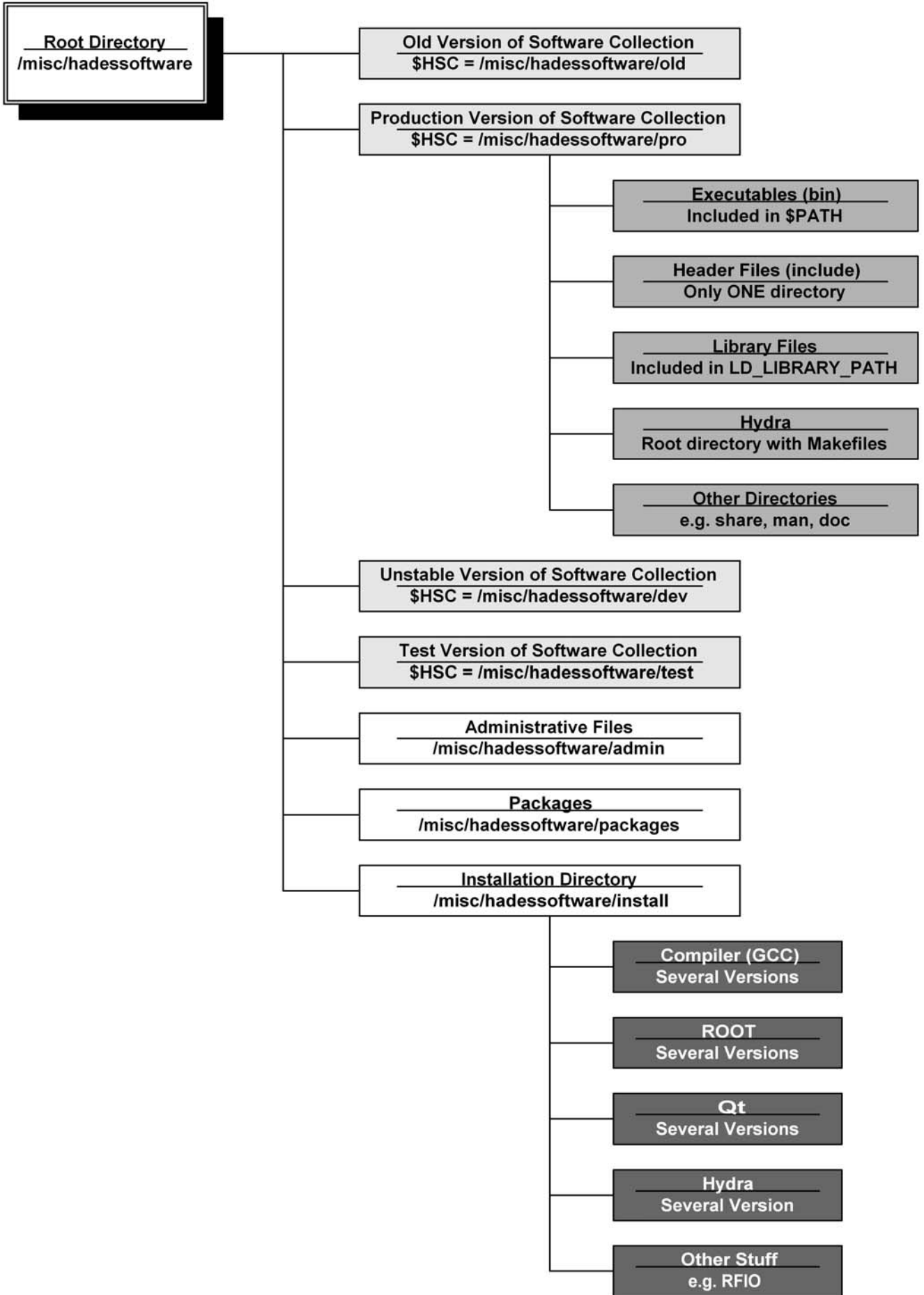
- Need of a **portable reference Installation**
- Full control over versions and structure of installed software packages
- Simpler directory trees, paths, much less variables
- More flexible
- More reliable
- Easier to learn for novice users

## *How to use it*

- Execute (parse) the shell script `hadenv.sh` according to the version of the HSC you want to use e.g.:  
`. /misc/hadessoftware/pro/hedenv.sh`
- Start ROOT, use ORACLE, whatever ...
- To build private Hydra modules just checkout the files from CVS to any directory; go there and type: `make`
- It's the same with additional or brand new modules! Just create a directory in the directory where you checked out the other Hydra stuff.

## *Open Questions*

- How to include private (Hydra-)libraries?
- How to integrate private software packages (collections, respectively)



```
#####  
#  
# Main Makefile to build Hydra  
#  
#####
```

```
MODULES =      alignment  \  
               base       \  
               evtserver  \  
               hadesgo4   \  
               hyp        \  
               kickplane  \  
               mdc        \  
               mdcgarfield \  
               mdcpid     \  
               mdctrackD  \  
               mdctrackG  \  
               mdctrackS  \  
               mdcutil    \  
               online     \  
               onlinenv   \  
               ora        \  
               orasim     \  
               oraslow    \  
               orautil    \  
               pairs      \  
               phyana     \  
               pid        \  
               pidutil    \  
               qa         \  
               rich       \  
               richutil   \  
               shower     \  
               showertofino \  
               showerutil \  
               simulation  \  
               start      \  
               tof        \  
               tofino     \  
               tofutil    \  
               tools      \  
               trigger    \  
               triggerutil \  
               wall
```

```
# include the other definitions to build all module  
include $(HSC)/hydra/hydra.def.mk
```

```
### Override default settings here !
```

```
# include the rules for this global build  
include $(HSC)/hydra/hydra.global.mk
```

```
#####  
#  
# Makefile for the Base module  
#  
#####  
  
# the name of the library to be build - the name becomes libMdc.so  
LIB_NAME = Hydra  
  
# list of all sub-modules (directories) which are compiled to this  
# module (library file)  
SUB_MODULES =    datasource      \  
                 datastruct     \  
                 eventhandling  \  
                 evtserver      \  
                 geantutil      \  
                 geometry       \  
                 runtimedb      \  
                 util  
  
# include the definitions to build this module  
include $(HSC)/hydra/hydra.def.mk  
  
### Override default settings here !  
  
# include the rules to build this module consisting of submodules  
include $(HSC)/hydra/hydra.submodule.mk
```

```

#####
#
# Makefile for the MDC module
#
#####

# the name of the library to be build - the name becomes libMdc.so
LIB_NAME = Mdc

# list of all source files which build this library
SOURCE_FILES = hmdccall.cc \
               hmdccallsim.cc \
               hmdccal2.cc \
               hmdccal2par.cc \
               hmdccal2parsim.cc \
               hmdccal2sim.cc \
               hmdccalibrater1.cc \
               hmdccalibrater2.cc \
               hmdccalibrater2sim.cc \
               hmdccalpar.cc \
               hmdccalparraw.cc \
               hmdccelleff.cc \
               hmdccellgroup.cc \
               hmdcclosepaircutspar.cc \
               hmdccconnectedwires.cc \
               hmdcccontfact.cc \
               hmdccutstat.cc \
               hmdcdataword.cc \
               hmdcdetector.cc \
               hmdcdigitizer.cc \
               hmdcdigitpar.cc \
               hmdcevreadout.cc \
               hmdcgeantcell.cc \
               hmdcgeantreader.cc \
               hmdcgeompar.cc \
               hmdcgeomstruct.cc \
               hmdchit.cc \
               hmdchitsim.cc \
               hmdclayergeompar.cc \
               hmdclookupgeom.cc \
               hmdclookupraw.cc \
               hmdcmboreadout.cc \
               hmdcparasciifileio.cc \
               hmdcparrootfileio.cc \
               hmdcppevtfilter.cc \
               hmdcraw.cc \
               hmdcraweventheader.cc \
               hmdcrawstruct.cc \
               hmdcseg.cc \
               hmdcsegsim.cc \
               hmdcsetup.cc \
               hmdctaskset.cc \
               hmdctdcchannel.cc \
               hmdctdcthreshold.cc \
               hmdctimecut.cc \
               hmdctrkcand.cc \
               hmdctrk.cc \
               hmdcunpacker.cc \
               hmdcvertexfind.cc \
               hmdcwirestat.cc \
               hmdcxy.cc

# include the other definitions to build this module
include $(HSC)/hydra/hydra.def.mk

### Override default settings here !

# include the rules to build this module
include $(HSC)/hydra/hydra.module.mk

```